

Turvatikas Safety Ladder® Inspection instructions for the Climbing Carriage No. 930

Turvatikas Safety Ladders' Climbing Carriage No. 930 is built according to the definition of the standard EN 353-1:2014 + A1:2017, and its annual inspections are allowed to be done only by a person authorized by Eltel.

In the annual inspection of the Climbing Carriage No. 930, the instructions on performing the inspection given in standard EN 365:2004+AC:2006 must be followed.

Apart from this, the user must inspect the Climbing Carriage No. 930 always before using it, to ensure reliable operation of the Climbing Carriage No. 930 during use.

The standard No. 365 defines the markings that the Climbing Carriage No. 930 must at least have in order for it to meet the requirements set by the standard in terms of markings. The same standard also defines the minimum requirements for entries in the record to be filled out from the inspection.

Below are the detailed instructions for performing the inspection:

The authorization to inspect Turvatikas Safety Ladder® -products

The authorization is obtained by passing the Turvatikas Safety Ladder Inspector's exam. The Turvatikas Safety Ladder inspector's certificate is free and is valid for three years.





It is the responsibility of the owner/holder of the Climbing Carriage No. 930 to ensure that the person who inspects the Climbing Carriage has a valid Turvatikas Safety Ladders' inspector certificate.

Inspection of the Climbing Carriage No. 930

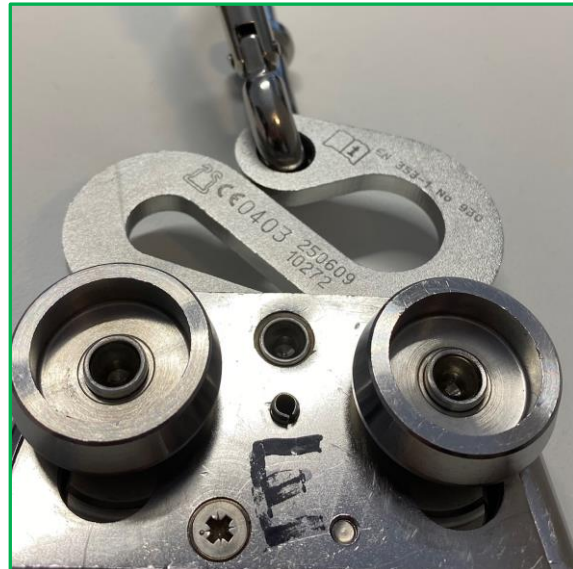
1. The requirements of the standard regarding the markings of the Climbing Carriage

At least the following markings must be found on the Climbing Carriage No. 930:

- manufacturer's trademark ()
- serial number of the product (xxxxx)
- model of the product (No. 930)
- the year of manufacture of the product (xxxxxx)
- image ID to indicate that the user needs to read the instructions for use ()



No required markings



Required markings are OK

If the markings on the Climbing Carriage do not meet the requirements of the standard, the Climbing Carriage must be permanently removed from use.

2. Carabiner

Check that the

- carabiner hook on the Climbing Carriage is original
- carabiner hook has a locking sleeve
- carabiner hook lock is working properly



Carabiner is not the original one



Carabiner is OK

If the carabiner hook is not original, if there is uncertainty in the operation of the original carabiner hook or if the locking sleeve is missing from the carabiner hook, the Climbing Carriage must be permanently removed from use, or it can be sent for maintenance to Turvatikas Safety Ladder.

NOTE:

Before sending the Climbing Carriage for maintenance to Turvatikas Safety Ladder, verify all listed checkpoints below, to ensure the Climbing Carriage fulfills all the other requirements. The instructions to send Climbing Carriage for maintenance are at the end of this document.

3. Condition of the spring acting on the wheels

- Check that both wheels are in their upper position when the stroller is placed so that its bottom is horizontal.
- Push the other wheel down and make sure that the other wheel does not lift up.



The spring has worn out



The spring is OK

If both wheels are not in their upper position, or if one wheel rises up when the other wheel is pushed down, the Climbing Carriage must be permanently removed from use

4. Support bar

- Check that the Climbing Carriage has a support bar in the middle of the bottom



No support bar

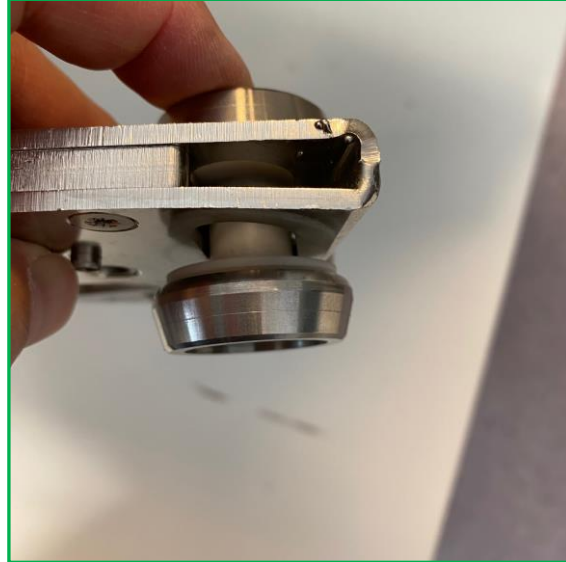


Support bar is OK

If the support bar is missing, the Climbing Carriage must be permanently removed from use.

5. Bearings of the wheels

- Check that the plastic sleeves in the Climbing Carriage are not worn.



The bearings are worn out



The bearings are OK

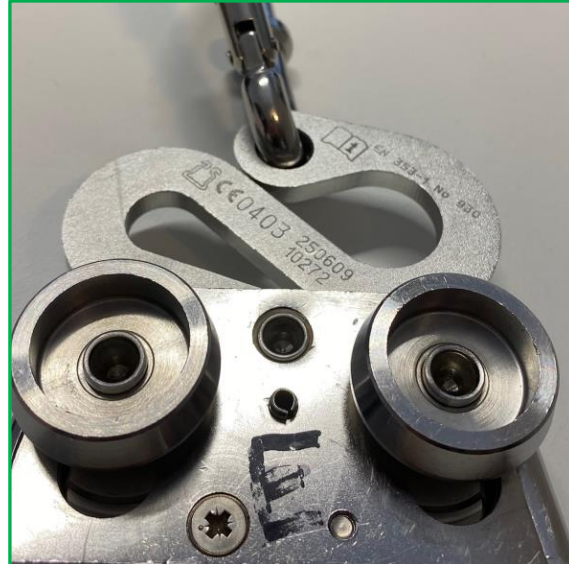
If the bearings are worn, the Climbing Carriage must be permanently removed from use.

6. Wear and tear on the frame

- Check that the wheels of the Climbing Carriage have not worn down the trolley's frame, and there is no other noticeable wear on the frame.



There is considerable wear on the frame



The frame is OK

If there is significant wear on the frame, the Climbing Carriage must be permanently removed from use.

7. Condition of the shock absorber

- Check that the shock absorber is not twisted or bent

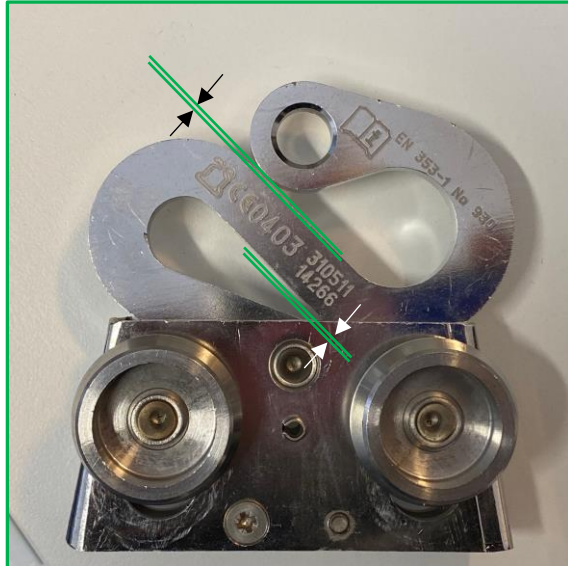


The shock absorber is twisted

The shock absorber is OK

If the shock absorber is twisted or bent, the Climbing Carriage must be permanently removed from use.

- Check that the gap between the different parts of the shock absorber are not more than 10 mm.



The shock absorber is OK

If the gap in the shock absorber is more than 10 mm, the lifting carriage must be permanently removed from use.

8. Riveting of the wheels

- Check that the wheels of the Climbing Carriage are firmly attached to their axles. Take a firm grip on both wheels on the same axle and spin them in opposite directions.

If the wheels are able to rotate with each other, the lift truck must be permanently removed from use.

Recording of the Climbing Carriage No, 930

According to the requirements of the standard, records must be kept of each fall protection product.

Below are listed in the standard EN 365:2004+AC:2006 required information for Climbing Carriage No. 930 recording:

- Product
- Model
- Manufacturer's name and contact information
- Serial number
- Year of manufacture
- Acquisition date
- Date when product was taken in use
- **Details of periodic inspections:**
 - Date of periodic inspection
 - Name and signature of the authorized person who performed the periodic inspection
 - Due date of the next periodic inspection

NOTE!

It is the responsibility of the user organization to make the recordings, add the required information to them and store them for possible future use.

Maintenance

If the Climbing Carriage needs maintenance, please send it together with

- a copy of the inspection record and
- return address

to Turvatikas Safety Ladder to the address:

Turvaticas Safety Ladder
Eltel Networks
Laturinkuja 8
FI-02650 ESPOO
FINLAND
Telephone: +358 40 311 3498

